



Fire Hydrant & Equipment



THE FIRE PROTECTION SPECIALISTS



Fire Hydrant & Equipment



Dry Type Fire Hydrants



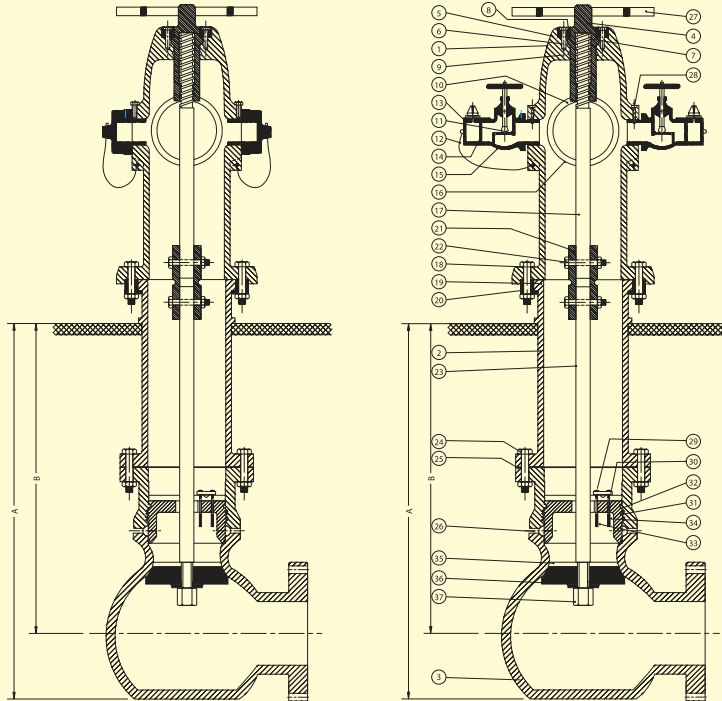
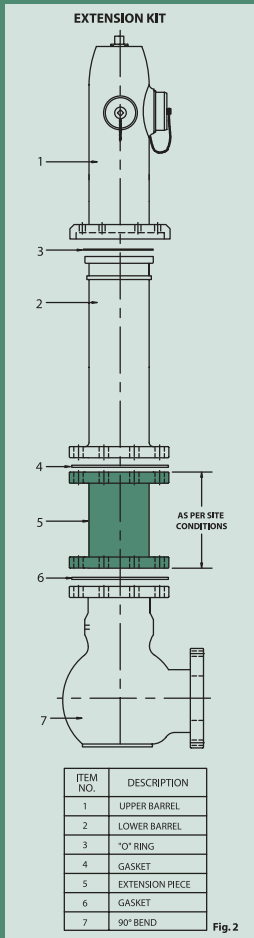
NFH Series Fire Hydrants

Model	Base Flange (Inch)	Dimensions (mm)		Working Pressure (Bar)
		A	B	
100NFH-800*	4	890	790	15
100NFH-1200*	4	1290	1190	15
150NFH-800*	6	890	790	15
150NFH-1200*	6	1290	1190	15

Features:

- Dry barrel design eliminates damage to the hydrant caused by freezing or corrosion of the upper part.
- Break away design to prevent accidents to the hydrants, where only the upper part of the flange would be broken upon impact.
- Designed as per AWWA C502, which applies for the wall thickness, loss of head and hose connection plugs.
- Simple rugged construction and easy to maintain.
- Externally sand blasted for smooth finish, painted red with electrostatic powder coating on the section above the ground and double coating of black bituminous paint on the section below ground.
- Optional: Barrel length extension kit in different lengths is available on request (Refer fig.2).

NO.	ITEM
37	OBTURATOR BLOCKADE NUT
36	MAIN VALVE OBTURATOR BOTTOM PLATE
35	ANTI-WATER HAMMER GUIDE
34	AUTOMATIC DRAIN VALVE SPRINGS
33	AUTOMATIC DRAIN VALVE BOLTS
32	O' RING DIA.120.3X2.6
31	AUTOMATIC DRAIN VALVE
30	O' RING DIA.40.471.78
29	AUTOMATIC DRAIN VALVE NUT M4
28	VALVE LOCK TO HYDRANT
27	OPERATING HANDLE
26	DRAIN HOLE TUBE
25	BOTTOM GASKET
24	BOTTOM BOLT
23	LOWER STEM
22	STEM COUPLING BOLT & NUT
21	STEM COUPLING
20	CLAW
19	O' RING
18	CLAW BOLTS
17	UPPER STEM
16	PUMPER CONNECTION
15	ANGLE HYDRANT VALVE
14	WASHER FOR FEMALE INSTANTANEOUS COUPLING
13	BLANK PLUG
12	PLUG CHAIN
11	VALVE SEAT WASHER
10	PUMPER COUPLING PLUG
9	O' RING
8	O' RING
7	TOP COVER SHEET
6	COVER BOLT
5	COVER
4	OPERATING NUT
3	90° BEND
2	LOWER BARREL
1	UPPER BARREL



NFH SERIES

Fig.1

NFHV SERIES



Specifications

Outlet

4" Pumper connection of female thread coupling to BS336 with cap and chain
2x2.5" Nipple with cap and chain

Optional NFHV Series

2x2.5" quick coupling available on request (for NFH Series)
2x2.5" Straight through landing valve with cap and chain

Material
Standard
Suffix DI
Suffix CD

Complete Cast Iron
For Ductile Iron underground barrel
For complete Ductile Iron



Standpipe

Specifications:

Model: NHYD 062	2.5"Ø Single Outlet
Model: NHYD 064	2.5"Ø Double Outlet
Inlet:	2.5"Ø Thread
Standpipe Body:	Aluminium Alloy to BS 1474
Optional:	Copper Alloy body



Hydrant Key

Specifications:

Model: NHYD 066	Aluminium Alloy
Model: NHYD 067	Grey Cast Iron 3ft
Model: NHYD 067	Grey Cast Iron 6ft



Hydrant Cabinet NHC 900

Specifications

Model	NHC 900
Cabinet Dimensions	W=90cm H=100cm D=25cm
Height of Legs	60cm from floor level
Fire Hoses	4Nos. Of 2.5" X 30m
Diffuser Nozzle	2.5" Inlet, 310 lpm@7bar
Jet Spray Nozzle	2.5" Inlet, 310 lpm@7bar
Handline Nozzle	2.5" Inlet, 440 lpm@3.5bar
Fire Extinguisher	6Kg Dry Powder / Clean Agent



Hydrant Cabinet NHC 750

Specifications:

Model:	NHC 750
Cabinet Dimensions:	W=80cm H=100cm D=25cm
Height of Legs:	60cm from floor level
Fire Hoses:	2Nos. Of 2.5" X 30m
Diffuser Nozzle:	2.5" Inlet, 310 lpm@7bar
Hydrant Wrench:	Adjustable Type, 1 No.
Lug Spanner:	1 No.
Coupling Gasket:	2.5" Rubber, 4 Nos.
Fire Axe:	1 No.



Wet Type Hydrant

Specifications:

Model: NHYD 059	2.5" ϕ Plain Outlet
Model: NHYD 060	2.5" ϕ Controllable Outlet
Body:	Gray Cast Iron to BS 1452
Outlet:	Copper Alloy to BS 1400 LG2
Inlet:	4" ϕ Flanged
Test Pressure:	24 Bar



Under Ground Hydrant

Specifications:

Model:	NHYD 058
Body:	Gray Cast Iron to BS 1452
Outlet:	2.5" ϕ , Copper Alloy to BS 1400 LG2
Inlet:	3" ϕ Flanged
Test Pressure:	24 Bar

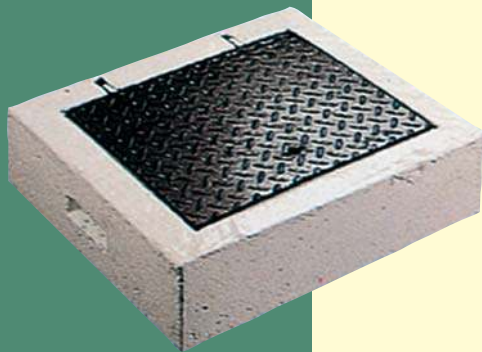
Hydrant Chamber

Specifications:

Model:	NHYD 073 CI
Material:	Cast Iron
Opening Dimensions:	410mm X 330mm
Bedding Dimensions:	560mm X 495mm



Model:	NHYD 072 MS
Cover:	Cast Iron
Body:	Concrete
Opening Dimensions:	445mm X 280mm
Bedding Dimensions:	580mm X 415mm



Duck Foot Bend

Specifications:

Model:	NHYD 070
Body:	Grey Cast Iron to BS 1452
Outlet:	4" ϕ Flanged
Inlet:	4" ϕ Flanged



NEW

Dry Type Fire Hydrant With Security Cap

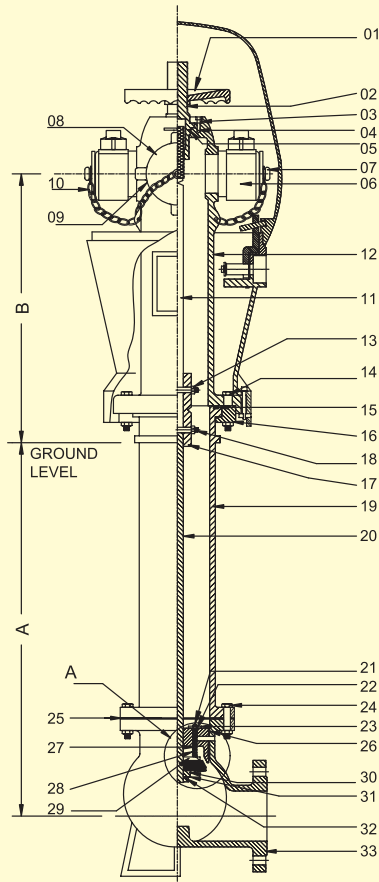


NHC Series Fire Hydrants With Security Cap

Model	Base Flange (Inch)	Dimensions (mm)		Working Pressure (Bar)
		A	B	
100NHC-450	4	425	445	15
100NHC-800	4	800	445	15
100NHC-1200	4	1200	445	15

Features:

- The body of the hydrant may be turned to any position(360°) to provide correct orientation of the outlets.
- Light weight hood made of Aluminium or GRP.
- Automatic drain system drains the water in the upper part when the main valve is closed thus avoiding damage caused by freezing.
- An extension stainless steel rod with breakaway design.
- Breakaway design to prevent accidents to the hydrants, where only the upper part of the flange will be broken upon impact.
- Simple rugged construction and easy to maintain.



NO.	ITEM
33	ANTI WATER HAMMER GUIDE
32	MAIN VALVE OBTURATOR
31	SEAT RING
30	MAIN VALVE OBTURATOR FLANGE
29	"O" RING 4.47X1.78
28	AUTOMATIC DRAIN VALVE SPRINGS
27	AUTOMATIC DRAIN VALVE BOLTS
26	"O" RING 4.47X1.78
25	BARREL-DUCKFOOT GASKET 120X156X2
24	BARREL-DUCKFOOT BEND BOLTS M16X70
23	AUTOMATIC DRAIN VALVE
22	"O" RING 4.47X1.78
21	AUTOMATIC DRAIN VALVE NUT M4
20	LOWER SQUARE SPINDLE
19	DIN FLANGED BARREL
18	SPINDLE CONNECTOR BOLTS M12X70
17	SPINDLE CONNECTOR
16	CLAWS
15	"O" RING 142X6
14	CLAW BOLTS M16X80
13	SPINDLE CONNECTOR BLOCKADE NUT M12
12	BODY W/3 BSP THREADED OUTLETS
11	UPPER SQUARE SPINDLE
10	CONNECTOR CAP CHAIN
09	PUMPER NOZZLE 4" BS 336
08	PUMPER NOZZLE 4" BS 336 + GASKET
07	INSTANTANEOUS CONNECTOR CAP 2 1/2"
06	INSTANTANEOUS CONNECTOR 2 1/2"
05	"O" RING 40X4
04	HYDRANT CAP BOLTS ALLEN 8.8 M8X25
03	HYDRANT CAP
02	UPPER OPERATING ROD
01	HANDWHEEL ∅ 165 + SCREW + WASHER



Specifications
Outlet

4" Pumper connection of female thread coupling to BS336 with cap and chain
2 X 2.5" quick coupling with cap and chain

Material
Under Ground
Above Ground

Ductile Iron
Cast Iron

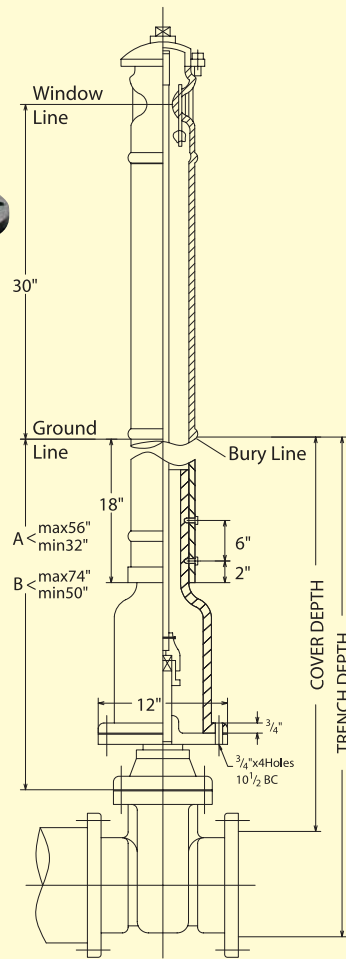
Post Indicator with Iron Gate Valve



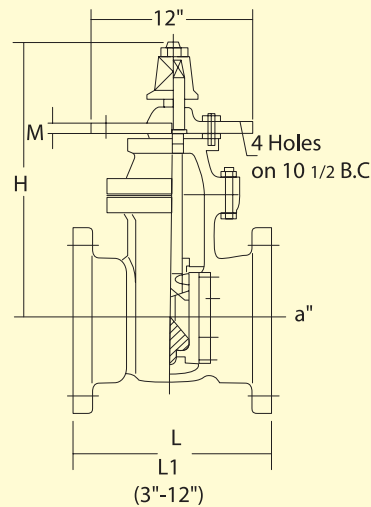
Post Indicator		
Model	Valve Size (Inch)	Trench Depth (Inch)
NPI-100	4	44 to 68
NPI-150	6	50 to 73
NPI-200	8	53 to 77
NPI-250	10	58 to 82
NPI-300	12	62 to 86

Features:

- Suitable to operate a buried or inaccessible valve.
- Post Indicator clearly indicates whether the valve is open or shut.
- Post Indicator height can be field adjusted.
- Opening wrench can be locked to the indicator post to prevent unauthorised operation.
- Simple rugged construction and easy to maintain.



Under Ground Iron Gate Valve			
Model	Base Size (Inch)	Dimensions (Inch)	
		L	H
NGV-100	4	10	13.65
NGV-150	6	11.5	18.06
NGV-200	8	11.5	20.99
NGV-250	10	13	24.6
NGV-300	12	14	28.23



Specifications Post Indicator

Body
Operating Stem

Cast Iron
Cast Bronze

Gate Valve

Body
Working Pressure
Test Pressure

Cast Iron
175 psi
350 psi



QUALITY SYSTEM

National Fire Fighting Manufacturing Co. Ltd. is certified to ISO 9001 Quality System by Loss Prevention Certification Board, U.K. and Bureau Veritas Quality International. Manufacturing process are based on a quality control system, that ensures conformity of raw materials, well monitored process control techniques and vigilant final inspection, giving a consistently high quality finished product.

APPROVALS

Quality assurance is of paramount importance in NAFFCO's priorities. NAFFCO has been awarded many product approvals like Kite Mark, CE Mark etc. against a wide range of Fire Extinguishers and Fire Hose Reels.

ENGINEERING CAPABILITIES

NAFFCO is backed by a team of professionals who are well qualified and specialized in their respective field viz - Design, Development, Production and Project Implementation. Our investment in applied research and development program concentrates on innovations which meets customer needs.

PRODUCT RANGE



We reserve the right to modify specifications without prior notice

Our Aim is to become your supplier of choice while focusing on value added products and services that matter most to you



NATIONAL FIRE FIGHTING MANUFACTURING FZCO
PO Box 17014, Dubai, United Arab Emirates.
Tel 971 4 881 5653, Fax 971 4 881 6229
Email: info@naffco.com
www.naffco.com